

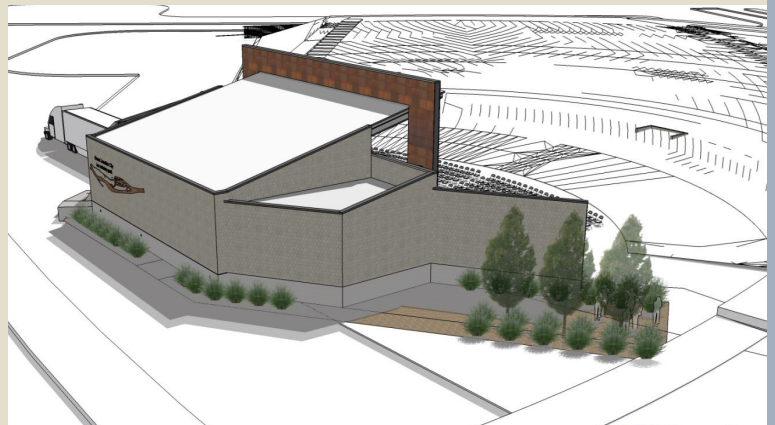
## Amphitheater at **LAS COLONIAS** Park

Nestled along the Colorado River, the newly built Amphitheater at Las Colonias Park offers views of the Colorado National Monument, Grand Mesa and Bookcliffs creating the perfect setting for any occasion. It offers easy access to the Colorado Riverfront Trail and is within one mile of Grand Junction's picturesque downtown that embraces locally owned shops, restaurants, music and public art.

*proudly managed by*



- ◆ 5,000 total capacity
- ◆ VIP Seating for 500
- ◆ 40' x 60' stage
- ◆ Private parking
- ◆ Large side wings
- ◆ Market population of 250,000
- ◆ Close proximity to Salt Lake City and Denver
- ◆ Local media and in-house marketing team allows for ample marketing opportunities



### Booking Information

#### **Maria Rainsdon**

General Manager

970-263-5710

[mrainsdon@grandjunctionevents.com](mailto:mrainsdon@grandjunctionevents.com)

#### **Andrea Skarupski**

House Manager

202-276-4236

[askarupski@grandjunctionevents.com](mailto:askarupski@grandjunctionevents.com)

