

Electronic Waste (e-waste)



Starting March 1, the Mesa County landfill will no longer accept electronic waste.

City residents will not be able to dispose of their electronic waste in their garbage can or during the annual Spring Clean Up Program.

The Spring Clean Up Program can no longer take:

- Televisions
- Computers
- Monitors
- Laptops
- Scanners
- Printers
- VCRs
- DVD players
- Game consoles
- Cameras
- MP3 players
- Cell phones
- Fax machines
- Copiers

There are several options, however, for safely disposing of those wastes. The Mesa County Hazardous Waste Facility can properly collect and manage electronic items so they will not damage the surrounding environment.

The majority of electronic devices contain some amount of lead, mercury and cadmium, all of which can be potentially hazardous to the environment when not properly managed.

Where to Recycle E-Waste

There are several locations where you can bring your electronic waste for safe disposal. **All involve a small fee.**

Mesa County Hazardous Waste Facility, 3071 US Highway 50 in Grand Junction is open Thursday, Friday and Saturday from 8 a.m. to 4:30 p.m. The fee is \$0.42 per pound. For a complete list of items accepted or for more information visit www.mesacounty.us/swm or call (970) 241-6846 or (970) 255-0754

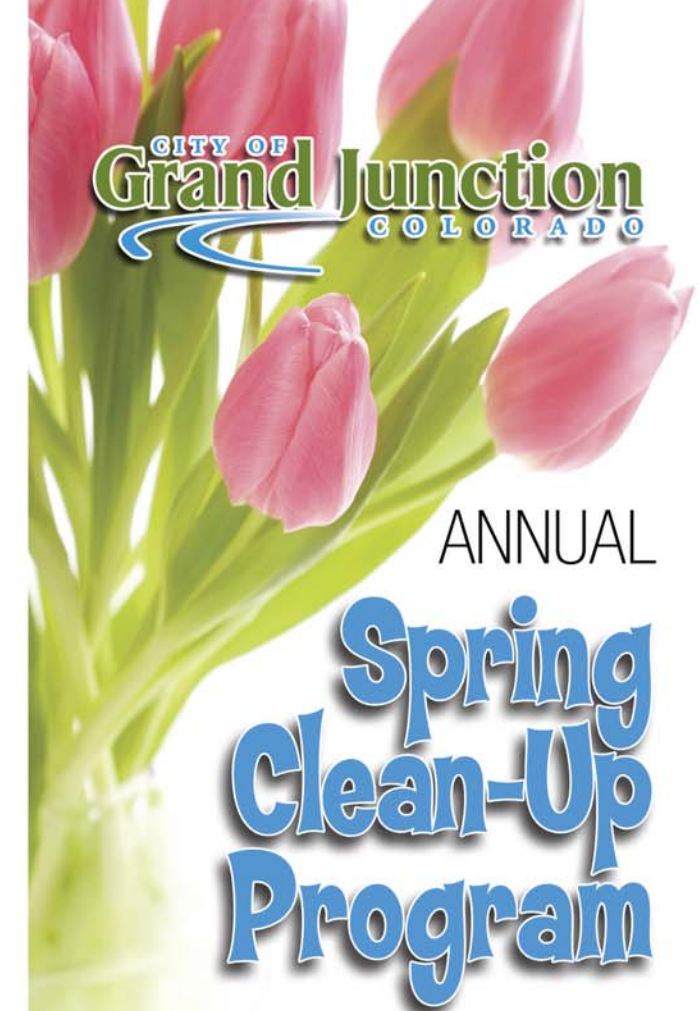
GJ CRI collection facility at City Shops, 333 West Avenue, Building F—follow the signs to Recycling Drop Off. Open Monday through Saturday, 9 AM to 3 PM. Check in with the attendant to pay the fees. For more information call (970) 242-1036 or visit their website at www.gjcri.com

Waste Management Recycle America, 1227 Winters Avenue
Open Monday through Friday, 7 AM to 4 PM and Saturday from 8 AM to 1 PM. For complete information call 866-514-3153.

**For more information,
go the City's
website at
www.gjcity.org**



250 NORTH 5TH STREET
GRAND JUNCTION, CO 81501



ANNUAL Spring Clean-Up Program

A free service for City residential properties

**If you live in the City limits:
North of North Avenue**
Your items need to be out by 7 AM on
April 27, 2009

**If you live in the City limits:
South of North Avenue**
Including annexed areas of Orchard Mesa & the Redlands
Your items need to be out by 7 AM on
May 4, 2009

Do not put your items out for pick up until two weeks before the program begins in your area. Any items out before the two week period are subject to a notice of violation and a possible \$1,000 fine.





WHAT IS SPRING CLEAN-UP?

Each year since at least the early 1900s, the City has conducted a clean-up program to rid the City of yard waste and unusable items from your house, garage and yard. It is our most popular residential program. Residents place these items on the curb and City crews sweep through the neighborhood, load the debris into trucks, and dispose of it at the landfill.

TIRES

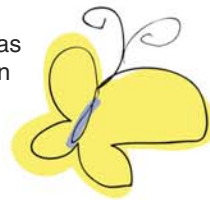
We **DO NOT** pick up tires during Spring Clean-up.

On May 9, City residents can bring their tires to a central drop-off site at City Shops, 333 West Ave. You must prove City residency, and the limit is 8 passenger car/light pickup truck size (only) tires per household. **Bring this flyer with you – it will be your proof of residency for the tire drop-off.** The drop-off site will only be open May 9 from 7 a.m. to 5 p.m.

HAZARDOUS MATERIAL

We need your help to keep our employees safe. Too often, crews find hazardous materials buried in the piles of debris. Leaking cans of paint, batteries, or any other hazardous liquids create a danger to our employees, and **CANNOT** be picked up. Please do not place hazardous materials out for Spring Clean-up. Instead, bring them to the Mesa County Household Hazardous Waste Facility, 3071 US Highway 50 on Thursday through Saturday from 8 a.m. to 4:30 p.m.

Some items that cannot be picked up such as batteries, motor oil, antifreeze and paint, can be recycled. For further information on where to recycle these materials, visit our website at www.gjcity.org



WHERE TO PLACE YOUR DEBRIS:

Place your debris in one pile in the **STREET GUTTER** in front of your address, except in areas with no on-street parking. Those residents will receive a separate notification on where to place their items. **ONLY YOUR ITEMS SHOULD BE IN FRONT OF YOUR ADDRESS.**

Place your items at your pick-up point by 7:00 a.m. on the first day (**MONDAY**) of your clean-up week. City crews move quickly, and will not be able to return once they have passed through your neighborhood.

Do not place debris against building, fences, etc. Place debris at least three feet minimum from any structure. The City will not be responsible for damage in these situations.

Keep all debris separate from your household trash containers so it will not interrupt your regular trash pick up.

DO NOT:

Do not put your items out for pick up until two weeks before the program begins in your area. Items put out BEFORE the 2-week period will be subject to a Notice of Violation and a possible \$1,000 fine.

If you see someone dumping material on your property and can get a license number, please report it to Code Enforcement at 244-1593.

- No tires
- No concrete/asphalt rubble
- No electronics (computers, cell phones, TVs, VCRs, DVD players, cameras, camcorders, etc.)
- No sealed container or vessel containing a liquid
- No batteries

Do not use any items as storage receptacles that you do not want removed, such as wheelbarrows, trash cans, tubs, etc. All items in the pick up area will be removed.

Do not place items behind the curb, on sidewalks or on grass or landscaped areas. Items placed in these areas will **NOT** be picked up.

RESTRICTIONS

No more than one City dump truck load (approximately 10 cubic yards) per residence. You will be billed **\$100 per load for anything over one City dump truck.** Do not combine piles with neighbors as you may exceed limit restrictions and be charged.

Nothing longer than 10' feet in length will be picked up, including tree trimmings and all other debris.

Crews will not pick up concrete or asphalt rubble because of weight, difficulty of handling, damage to equipment and cost.

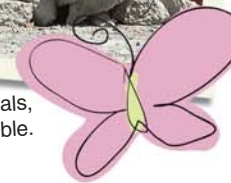
ITEMS WE WILL NOT PICK UP

- No fuel tanks of any kind
- No gas or air cylinders
- No refrigerated appliances or air conditioners
- No oil, grease, gasoline or paint

If your items are not picked up, a pink tag will be attached with the reason noted.



These are examples of items the City **CANNOT** pick up – chemicals, batteries, tires, paint and concrete rubble.



Consider donating

Several local charitable organizations can benefit from your donations of useable items. Instead of sending these items to the landfill, why not donate them? For a complete list of local charitable organizations visit our website at www.gjcity.org under Spring Clean Up.

FOR MESA COUNTY LANDFILL INFORMATION CALL

241-6846

8:00 a.m. to 4:30 p.m.

FOR MORE INFORMATION:

Call the Street Maintenance Division
at
244-1571 or 244-1575

