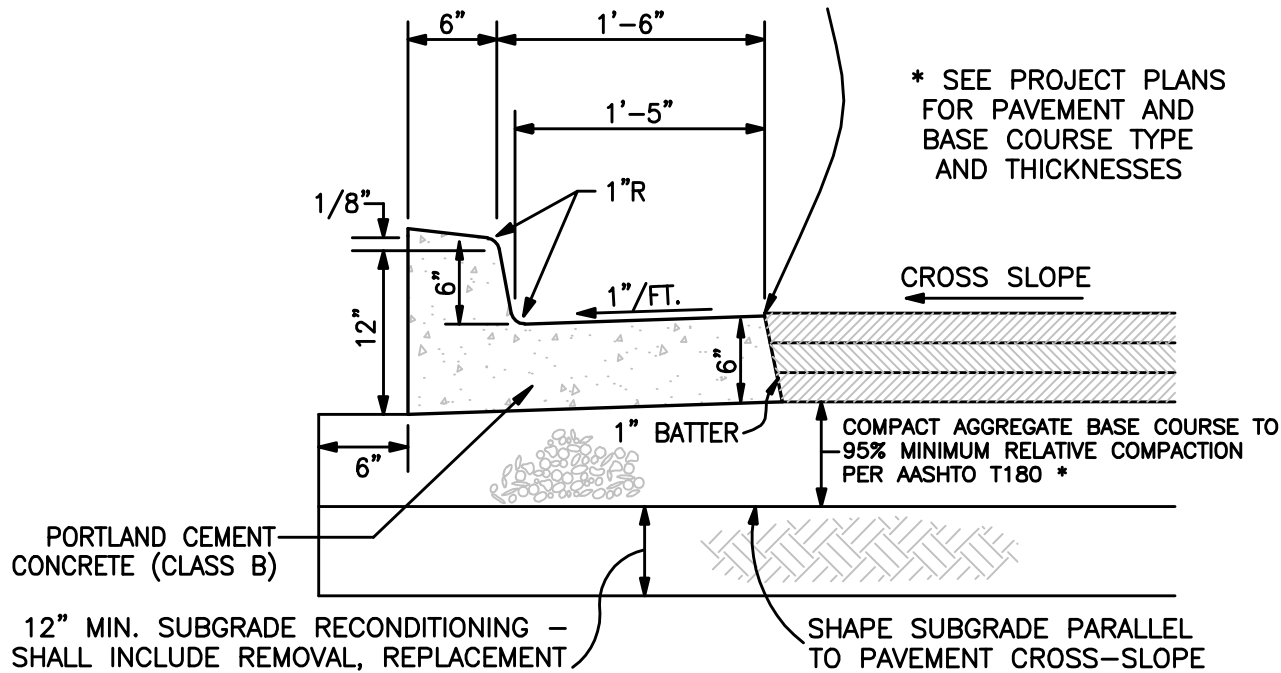


N:\cadd\c11\STANDARDS\STANDARD DRAWING DETAILS\2007--Concrete Details REV 5-10-07.dwg, C-05 (REV 3-2007), 5/29/2007 3:16:48 PM

FINISH BITUMINOUS PAVEMENT 1/4" TO 1/2" ABOVE EDGE OF GUTTER

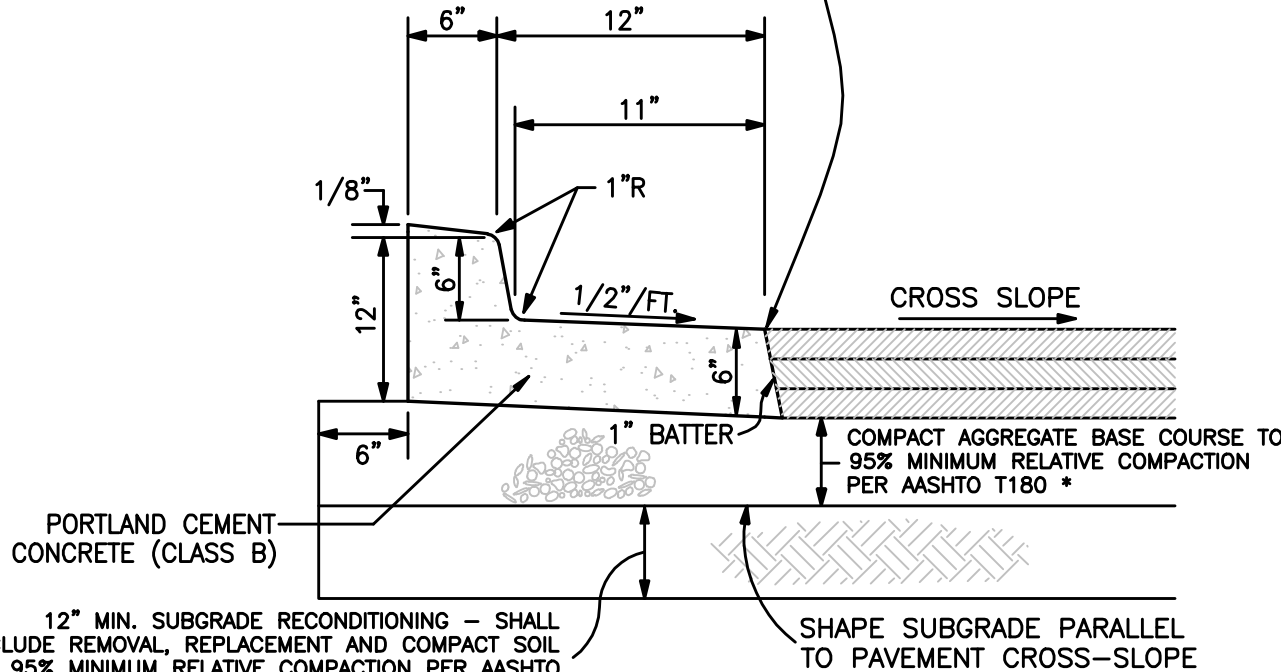


* SEE PROJECT PLANS FOR PAVEMENT AND BASE COURSE TYPE AND THICKNESSES

12" MIN. SUBGRADE RECONDITIONING - SHALL INCLUDE REMOVAL, REPLACEMENT AND COMPACT SOIL TO 95% MINIMUM RELATIVE COMPACTION PER AASHTO T-99.

STANDARD CURB AND GUTTER

FINISH BITUMINOUS PAVEMENT FLUSH WITH EDGE OF GUTTER



12" MIN. SUBGRADE RECONDITIONING - SHALL INCLUDE REMOVAL, REPLACEMENT AND COMPACT SOIL TO 95% MINIMUM RELATIVE COMPACTION PER AASHTO T-99.

CURB WITH SPILL GUTTER
(FOR USE ON RAISED MEDIANS ONLY)

VERTICAL CURB AND GUTTER

DEPARTMENT OF PUBLIC WORKS AND PLANNING
ENGINEERING DIVISION
CITY OF GRAND JUNCTION, COLORADO

STANDARD CONCRETE
DETAIL

APPROVED: DN
DATE: FEB. 2006
DRAWN: CM

PAGE
C-05