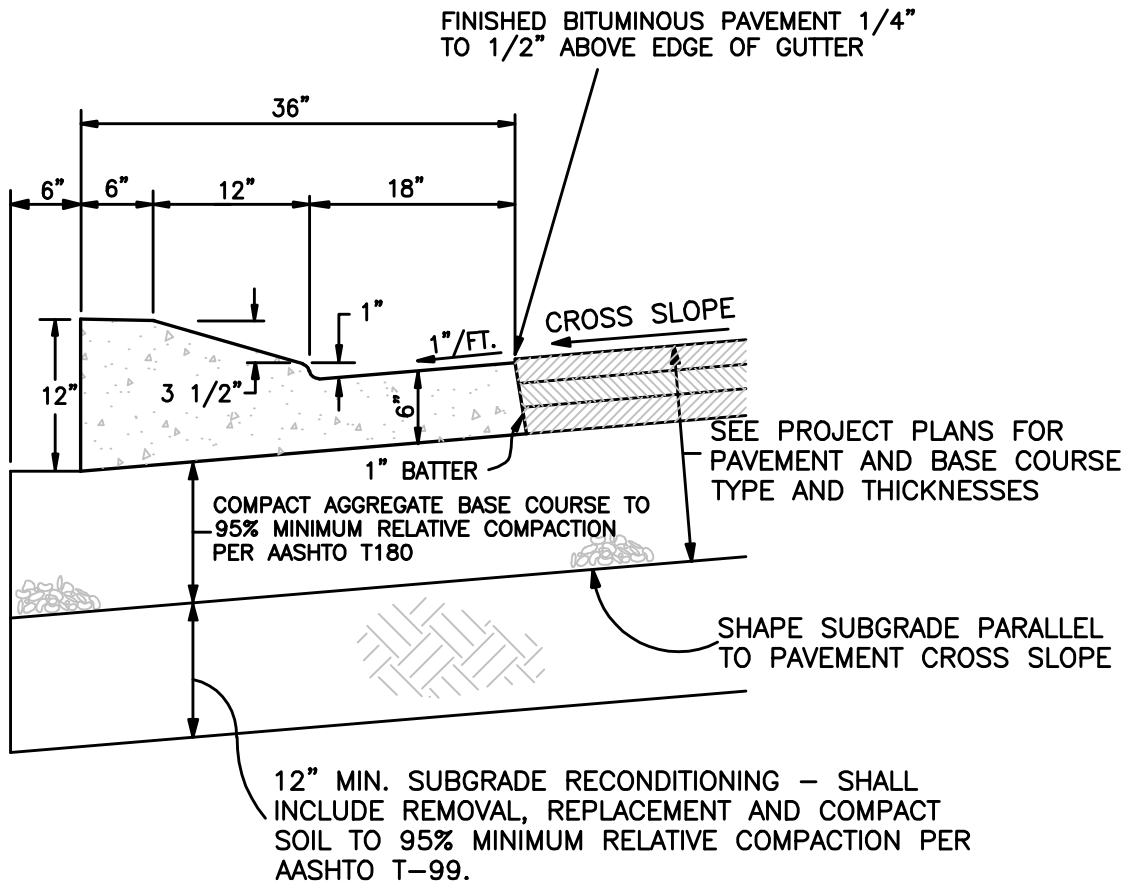


N:\cadd\CIT\STANDARDS\STANDARD DRAWING DETAILS\2007--Concrete Details REV 5-10-07.dwg, C-04 (REV 3-2007), 5/29/2007 3:16:24 PM



DRIVE OVER CURB AND GUTTER (RESIDENTIAL STREETS ONLY)

DEPARTMENT OF PUBLIC WORKS AND PLANNING
ENGINEERING DIVISION
CITY OF GRAND JUNCTION, COLORADO

STANDARD CONCRETE
DETAIL

APPROVED: DN
REV: FEB. 2006
DRAWN: CM

PAGE
C-04