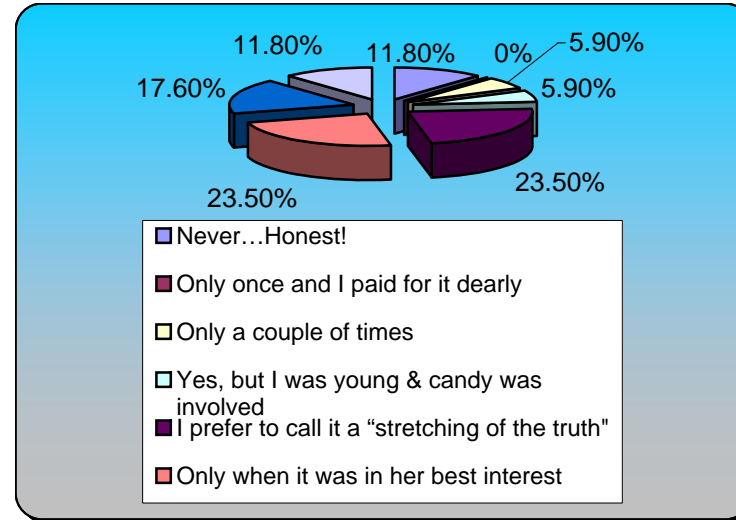


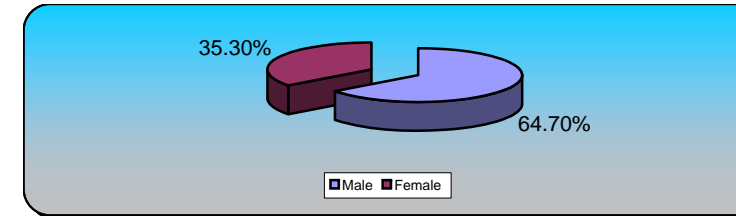
Turning Graphical Results by Question

Session Name: TAG-PC-Students 11-7-2007 6-18 PM
 Created: 11/12/2007 11:54 AM

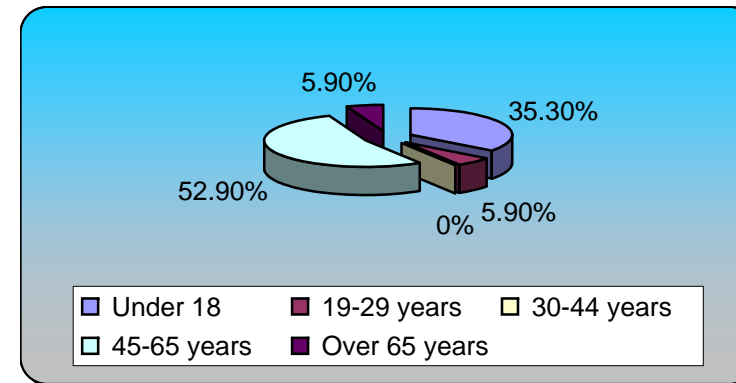
2.) Have you ever lied to your mother?		Responses	
Never...Honest!	2	11.76%	
Only once and I paid for it dearly	0	0%	
Only a couple of times	1	5.88%	
Yes, but I was young & candy was involved	1	5.88%	
I prefer to call it a "stretching of the truth"	4	23.53%	
Only when it was in her best interest	4	23.53%	
Yes, but my brother/sister made me do it	3	17.65%	
Too many times to count!	2	11.76%	
Totals	17	100%	



3.) Are you ...		Responses	
Male	11	64.71%	
Female	6	35.29%	
Totals	17	100%	



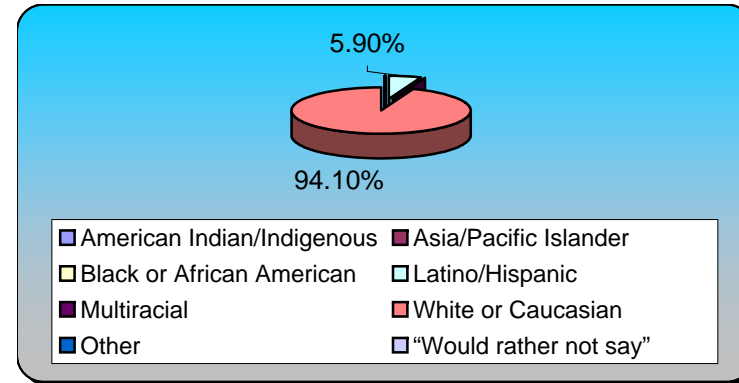
4.) What is your age?		Responses	
Under 18	6	35.29%	
19-29 years	1	5.88%	
30-44 years	0	0%	
45-65 years	9	52.94%	
Over 65 years	1	5.88%	
Totals	17	100%	



5.) How do you identify yourself?

Responses

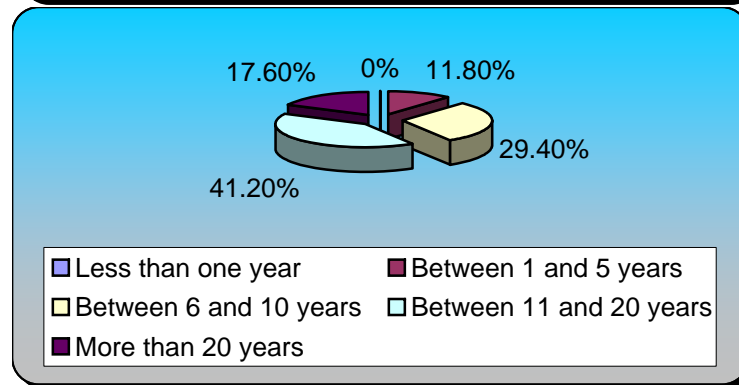
American Indian/Indigenous	0	0%
Asia/Pacific Islander	0	0%
Black or African American	0	0%
Latino/Hispanic	1	5.88%
Multiracial	0	0%
White or Caucasian	16	94.12%
Other	0	0%
“Would rather not say”	0	0%
Totals	17	100%



6.) How long have you lived in Grand Junction?

Responses

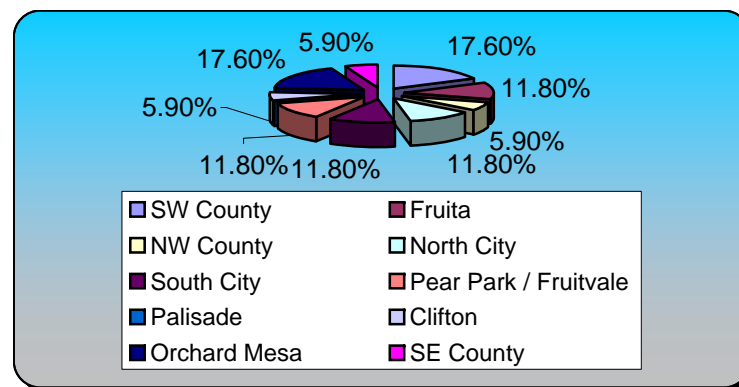
Less than one year	0	0%
Between 1 and 5 years	2	11.76%
Between 6 and 10 years	5	29.41%
Between 11 and 20 years	7	41.18%
More than 20 years	3	17.65%
Totals	17	100%



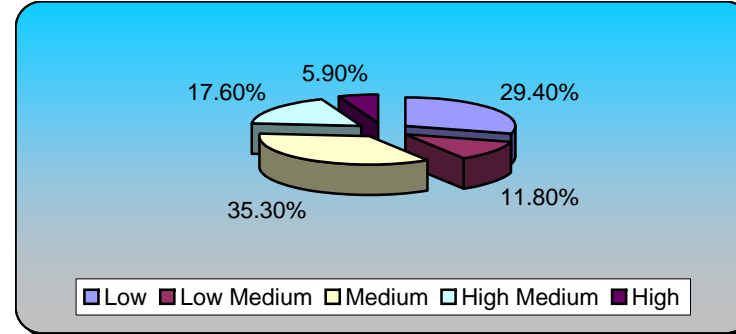
7.) Where do you live?

Responses

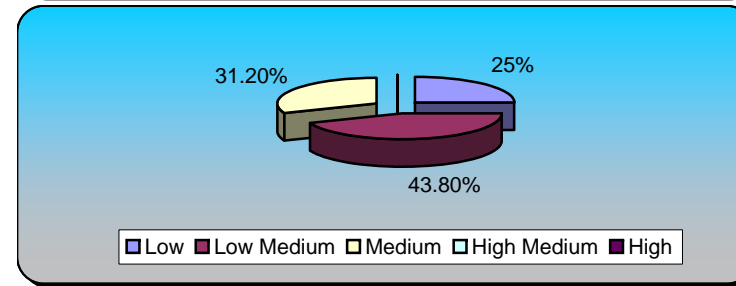
SW County	3	17.65%
Fruita	2	11.76%
NW County	1	5.88%
North City	2	11.76%
South City	2	11.76%
Pear Park / Fruitvale	2	11.76%
Palisade	0	0%
Clifton	1	5.88%
Orchard Mesa	3	17.65%
SE County	1	5.88%
Totals	17	100%



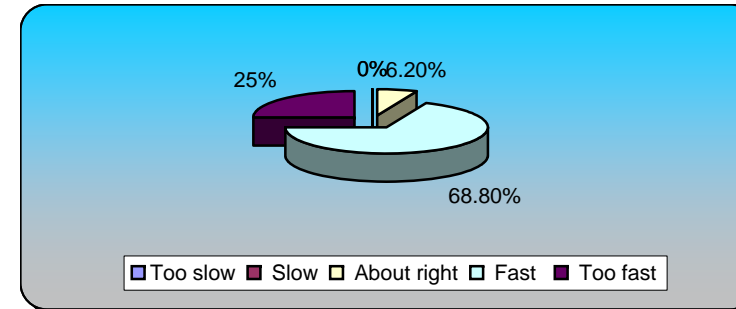
8.) What do you think the community's level of for land use planning?	Responses	
Low	5	29.41%
Low Medium	2	11.76%
Medium	6	35.29%
High Medium	3	17.65%
High	1	5.88%
Totals	17	100%



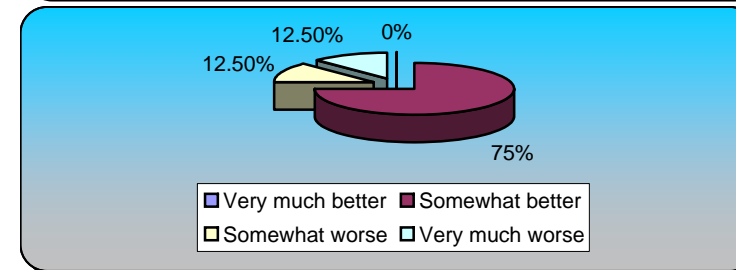
9.) What do you think the community's level of agreement is for land use planning?	Responses	
Low	4	25%
Low Medium	7	43.75%
Medium	5	31.25%
High Medium	0	0%
High	0	0%
Totals	16	100%



10.) How would you rate Grand Junction's growth over the past five years?	Responses	
Too slow	0	0%
Slow	0	0%
About right	1	6.25%
Fast	11	68.75%
Too fast	4	25%
Totals	16	100%

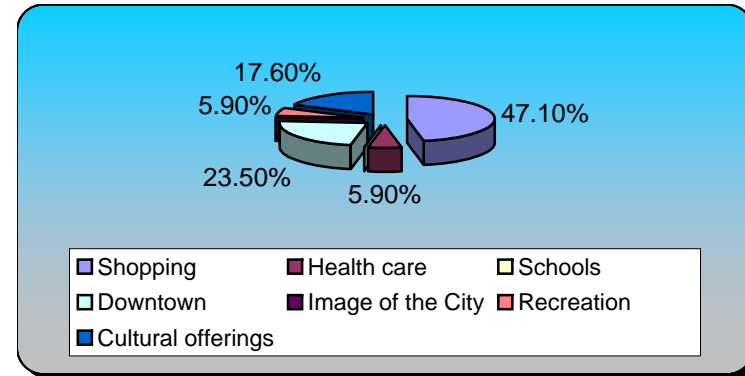


11.) During the time you've lived here, in general, do you think Grand Junction has become:	Responses	
Very much better	0	0%
Somewhat better	12	75%
Somewhat worse	2	12.50%
Very much worse	2	12.50%
Totals	16	100%



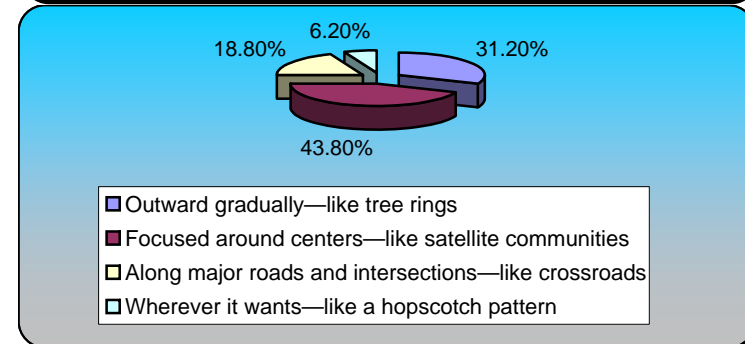
12.) Which of the following has MOST improved during the last 10 years?

	Responses	
Shopping	8	47.06%
Health care	1	5.88%
Schools	0	0%
Downtown	4	23.53%
Image of the City	0	0%
Recreation	1	5.88%
Cultural offerings	3	17.65%
Totals	17	100%



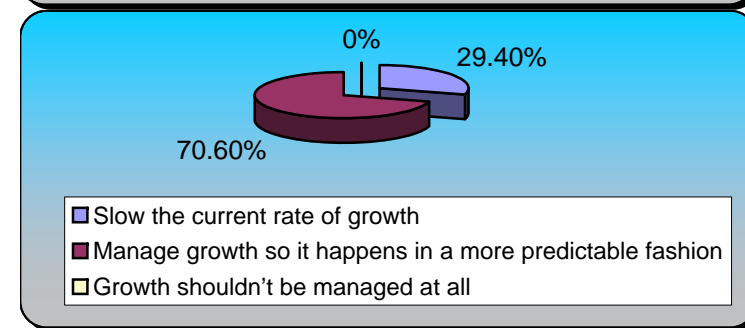
13.) Assuming Grand Junction continues to grow, how would you generally prefer to see growth happen?

	Responses	
Outward gradually—like tree rings	5	31.25%
Focused around centers—like satellite communities	7	43.75%
Along major roads and intersections—like crossroads	3	18.75%
Wherever it wants—like a hopscotch pattern	1	6.25%
Totals	16	100%



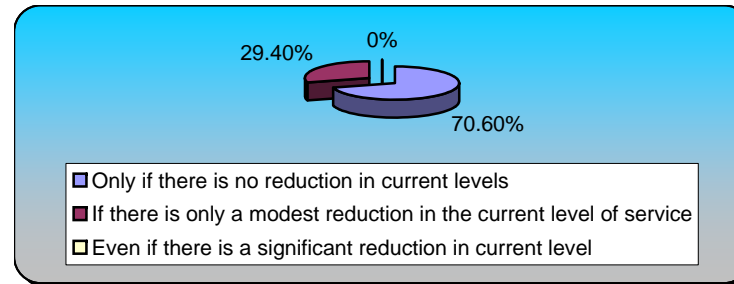
14.) Do you think the City should take measures to:

	Responses	
Slow the current rate of growth	5	29.41%
Manage growth so it happens in a more predictable fashion	12	70.59%
Growth shouldn't be managed at all	0	0%
Totals	17	100%



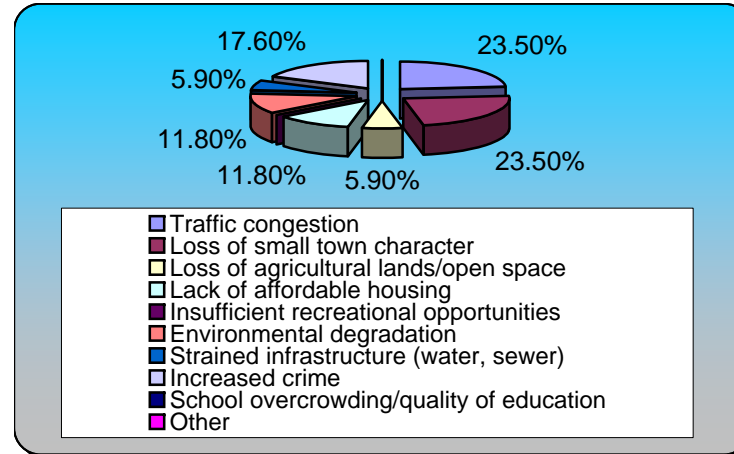
15.) If future development results in a reduced level of service to existing residents, would you support it?

	Responses	
Only if there is no reduction in current levels	12	70.59%
If there is only a modest reduction in the current level	5	29.41%
Even if there is a significant reduction in current level	0	0%
Totals	17	100%



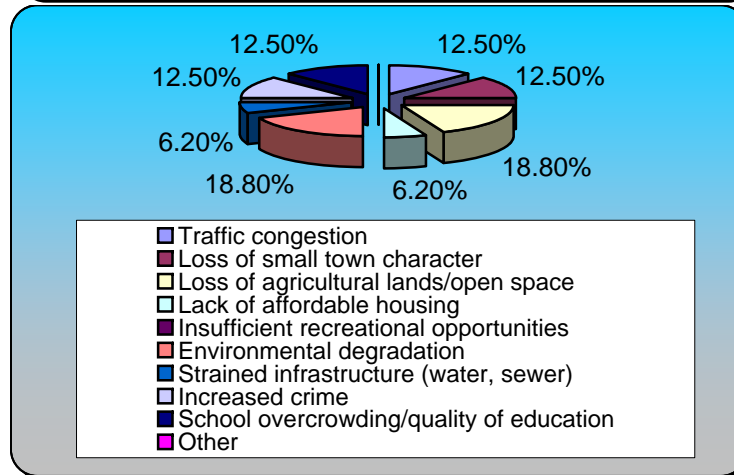
16.) Which of the following is your BIGGEST CONCERN about the City today? (asked twice)

	Responses	
Traffic congestion	4	23.53%
Loss of small town character	4	23.53%
Loss of agricultural lands/open space	1	5.88%
Lack of affordable housing	2	11.76%
Insufficient recreational opportunities	0	0%
Environmental degradation	2	11.76%
Strained infrastructure (water, sewer)	1	5.88%
Increased crime	3	17.65%
School overcrowding/quality of education	0	0%
Other	0	0%
Totals	17	100%



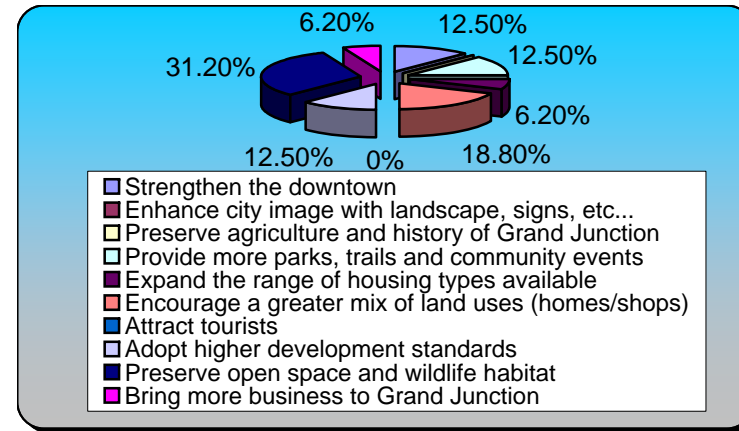
17.) Which of the following is your SECOND BIGGEST concern about the City today?

	Responses	
Traffic congestion	2	12.50%
Loss of small town character	2	12.50%
Loss of agricultural lands/open space	3	18.75%
Lack of affordable housing	1	6.25%
Insufficient recreational opportunities	0	0%
Environmental degradation	3	18.75%
Strained infrastructure (water, sewer)	1	6.25%
Increased crime	2	12.50%
School overcrowding/quality of education	2	12.50%
Other	0	0%
Totals	16	100%



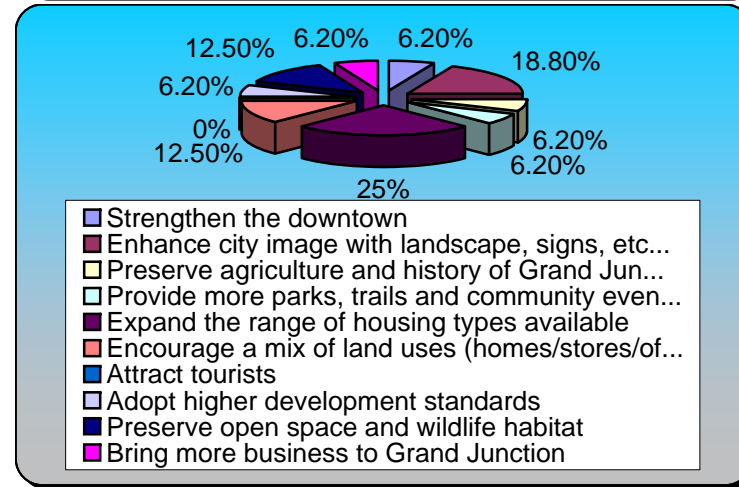
18.) What do you see as the HIGHEST PRIORITY for Grand Junction over the next ten years?

	Responses	
Strengthen the downtown	2	12.50%
Enhance city image with landscape, signs, etc...	0	0%
Preserve agriculture and history of Grand Junction	0	0%
Provide more parks, trails and community events	2	12.50%
Expand the range of housing types available	1	6.25%
Encourage a greater mix of land uses (homes/shops)	3	18.75%
Attract tourists	0	0%
Adopt higher development standards	2	12.50%
Preserve open space and wildlife habitat	5	31.25%
Bring more business to Grand Junction	1	6.25%
Totals	16	100%



19.) What do you see as the SECOND HIGHEST PRIORITY for Grand Junction over the next ten years?

	Responses	
Strengthen the downtown	1	6.25%
Enhance city image with landscape, signs, etc...	3	18.75%
Preserve agriculture and history of Grand Jun...	1	6.25%
Provide more parks, trails and community even...	1	6.25%
Expand the range of housing types available	4	25%
Encourage a mix of land uses (homes/stores/of...	2	12.50%
Attract tourists	0	0%
Adopt higher development standards	1	6.25%
Preserve open space and wildlife habitat	2	12.50%
Bring more business to Grand Junction	1	6.25%
Totals	16	100%



21.) Regarding Planning and decision-making (e.g. approving developments), which of the following BEST represents your feelings:

	Responses	
The City should have a plan, stick to it religiously	3	16.67%
City should have plan, depart from it only if public	12	66.67%
City should have a general plan, but use generally...	3	16.67%
A plan is not all that important, you can't plan	0	0%
Totals	18	100%

