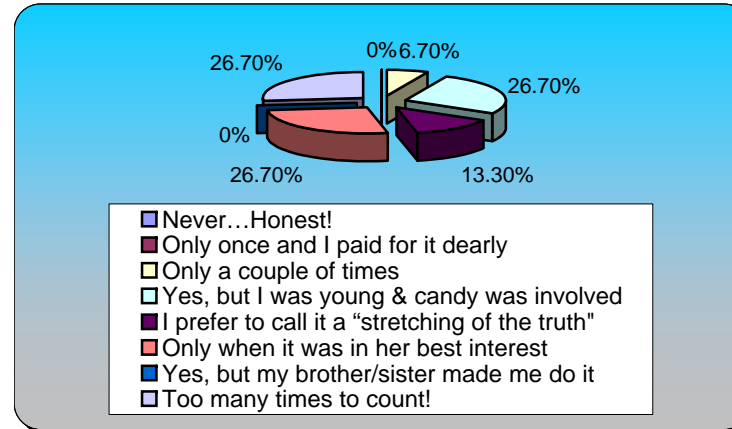


Turning Graphical Results by Question

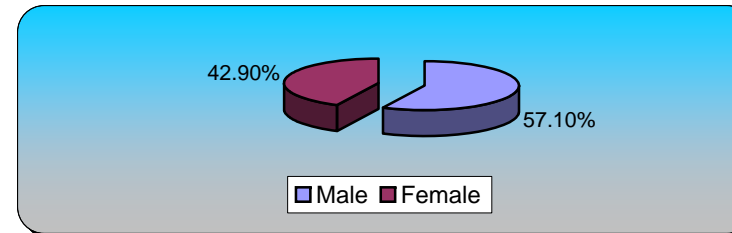
Session Name: New Session 11-15-2007 2-02 PM

Created: 11/15/2007 2:51 PM

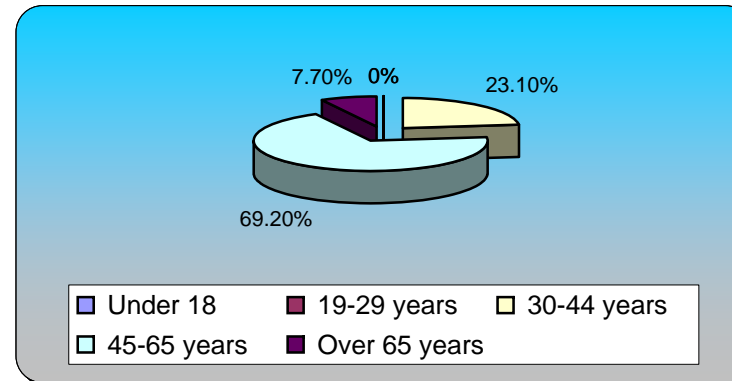
1.) Have you ever lied to your mother?	Responses	
Never...Honest!	0	0%
Only once and I paid for it dearly	0	0%
Only a couple of times	1	6.67%
Yes, but I was young & candy was involved	4	26.67%
I prefer to call it a "stretching of the truth"	2	13.33%
Only when it was in her best interest	4	26.67%
Yes, but my brother/sister made me do it	0	0%
Too many times to count!	4	26.67%
Totals	15	100%



2.) Are you ...	Responses	
Male	8	57.14%
Female	6	42.86%
Totals	14	100%



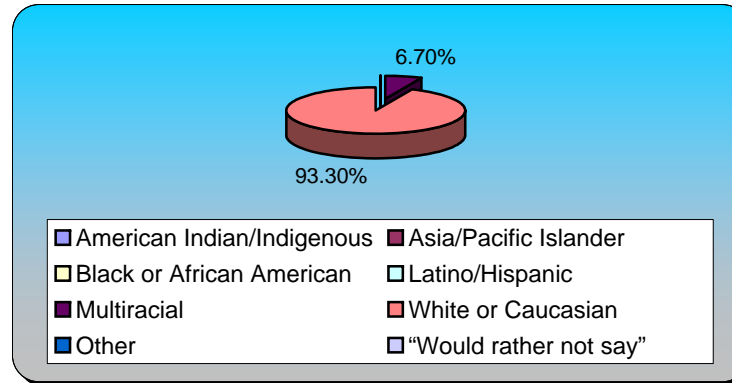
3.) What is your age?	Responses	
Under 18	0	0%
19-29 years	0	0%
30-44 years	3	23.08%
45-65 years	9	69.23%
Over 65 years	1	7.69%
Totals	13	100%



4.) How do you identify yourself?

Responses

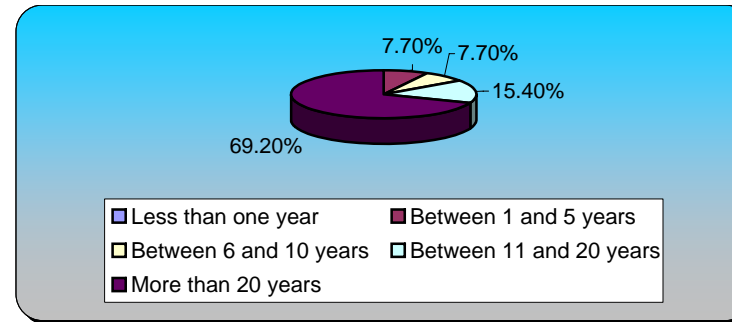
American Indian/Indigenous	0	0%
Asia/Pacific Islander	0	0%
Black or African American	0	0%
Latino/Hispanic	0	0%
Multiracial	1	6.67%
White or Caucasian	14	93.33%
Other	0	0%
“Would rather not say”	0	0%
Totals	15	100%



5.) How long have you lived in Grand Junction?

Responses

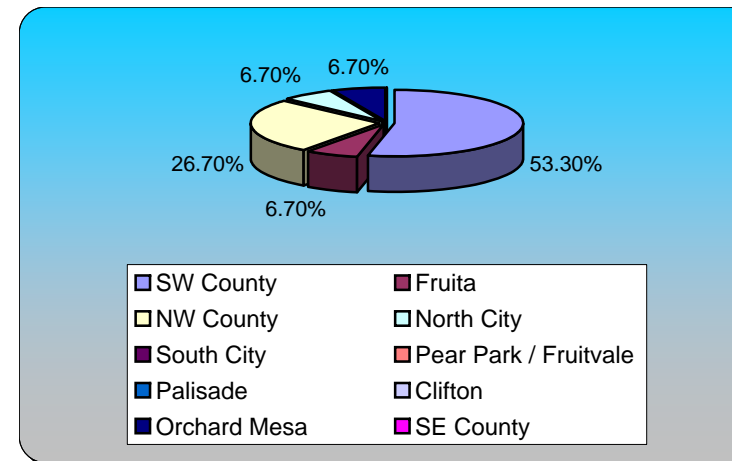
Less than one year	0	0%
Between 1 and 5 years	1	7.69%
Between 6 and 10 years	1	7.69%
Between 11 and 20 years	2	15.38%
More than 20 years	9	69.23%
Totals	13	100%



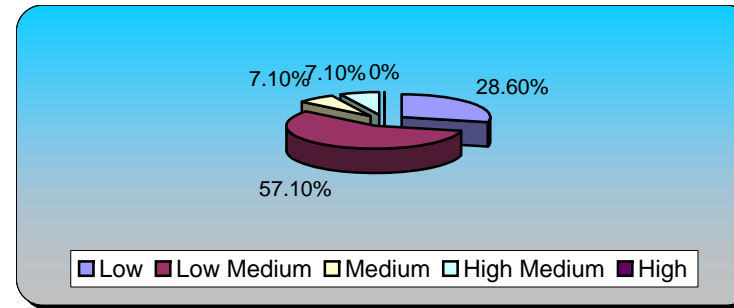
6.) Where do you live?

Responses

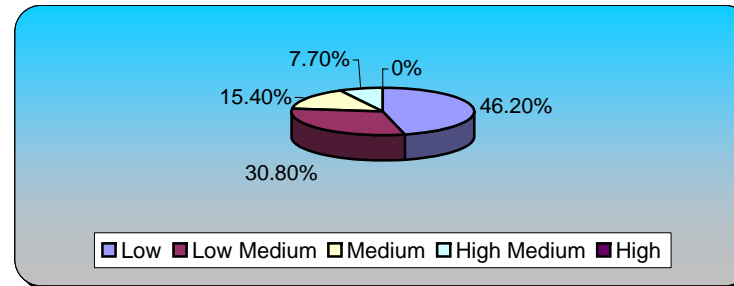
SW County	8	53.33%
Fruita	1	6.67%
NW County	4	26.67%
North City	1	6.67%
South City	0	0%
Pear Park / Fruitvale	0	0%
Palisade	0	0%
Clifton	0	0%
Orchard Mesa	1	6.67%
SE County	0	0%
Totals	15	100%



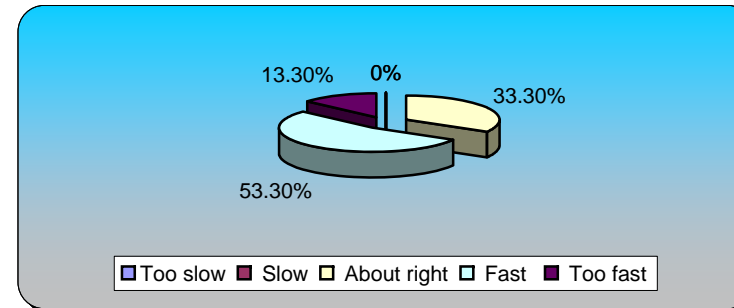
7.) What do you think the community's level of awareness for planning?	Responses	
Low	4	28.57%
Low Medium	8	57.14%
Medium	1	7.14%
High Medium	1	7.14%
High	0	0%
Totals	14	100%



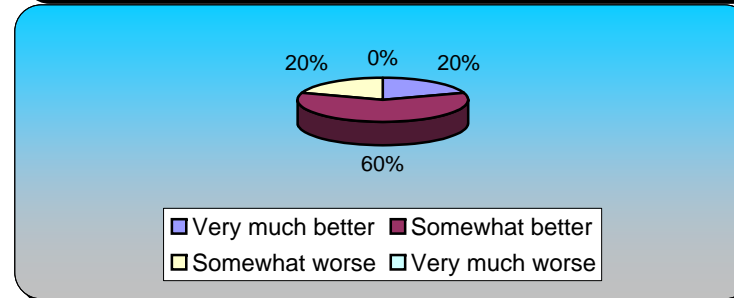
8.) What do you think the community's level of agreement s for planning?	Responses	
Low	6	46.15%
Low Medium	4	30.77%
Medium	2	15.38%
High Medium	1	7.69%
High	0	0%
Totals	13	100%



9.) How would you rate Grand Junction's growth over the past five years?	Responses	
Too slow	0	0%
Slow	0	0%
About right	5	33.33%
Fast	8	53.33%
Too fast	2	13.33%
Totals	15	100%

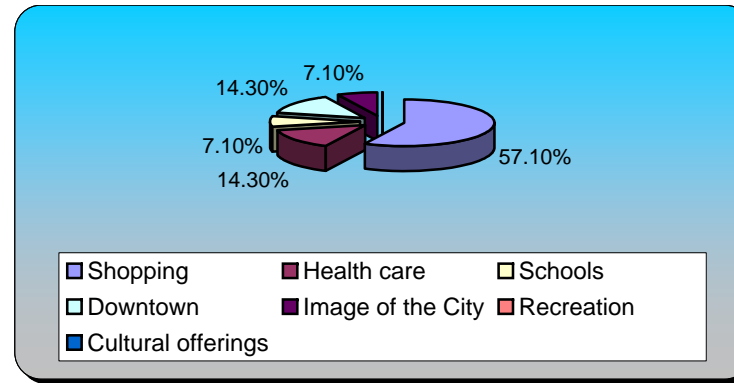


10.) During the time you've lived here, in general, do you think Grand Junction has become:	Responses	
Very much better	3	20%
Somewhat better	9	60%
Somewhat worse	3	20%
Very much worse	0	0%
Totals	15	100%



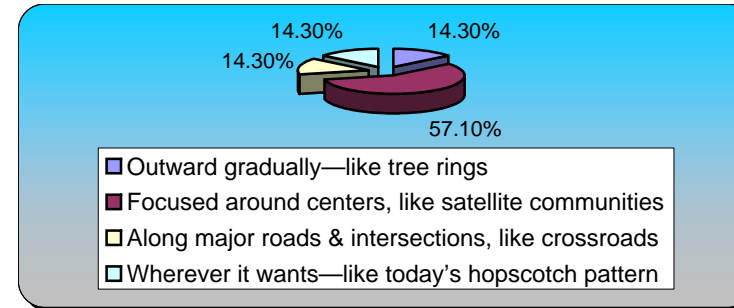
11.) Which of the following has MOST improved during the last 10 years?

	Responses	
Shopping	8	57.14%
Health care	2	14.29%
Schools	1	7.14%
Downtown	2	14.29%
Image of the City	1	7.14%
Recreation	0	0%
Cultural offerings	0	0%
Totals	14	100%



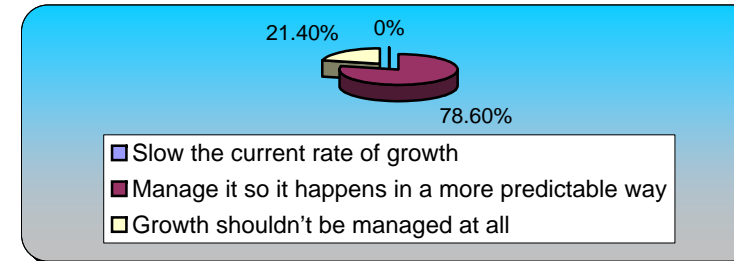
12.) Assuming Grand Junction continues to grow, how would you generally prefer to see growth happen?

	Responses	
Outward gradually—like tree rings	2	14.29%
Focused around centers, like satellite communities	8	57.14%
Along major roads & intersections, like crossroads	2	14.29%
Wherever it wants—like today's hopscotch pattern	2	14.29%
Totals	14	100%



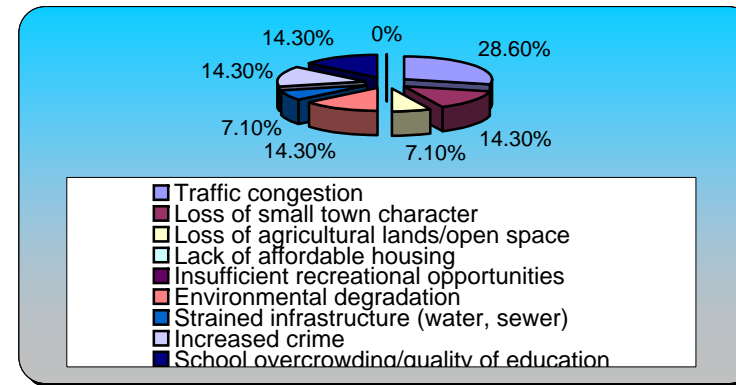
13.) Do you think the City should take measures to:

	Responses	
Slow the current rate of growth	0	0%
Manage it so it happens in a more predictable way	11	78.57%
Growth shouldn't be managed at all	3	21.43%
Totals	14	100%



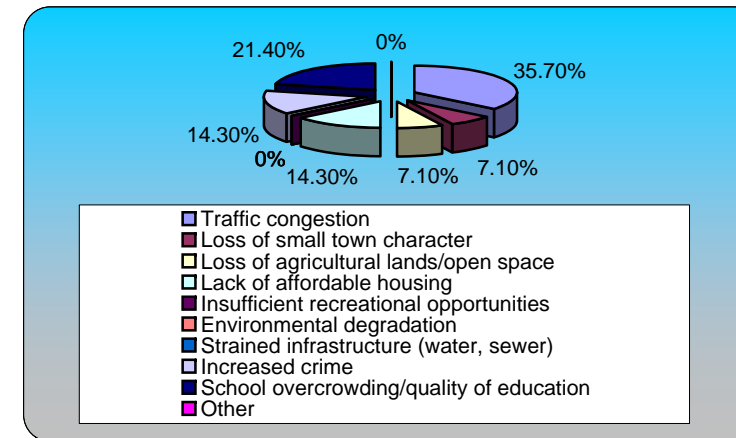
14.) Which of the following is your BIGGEST CONCERN about the City today? (asked twice)

	Responses	
Traffic congestion	4	28.57%
Loss of small town character	2	14.29%
Loss of agricultural lands/open space	1	7.14%
Lack of affordable housing	0	0%
Insufficient recreational opportunities	0	0%
Environmental degradation	2	14.29%
Strained infrastructure (water, sewer)	1	7.14%
Increased crime	2	14.29%
School overcrowding/quality of education	2	14.29%
Other	0	0%
Totals	14	100%



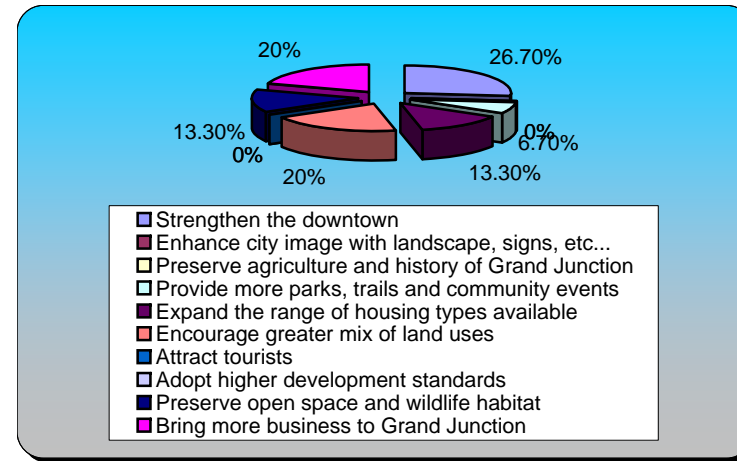
15.) Which of the following is your SECOND BIGGEST concern about the City today?

	Responses	
Traffic congestion	5	35.71%
Loss of small town character	1	7.14%
Loss of agricultural lands/open space	1	7.14%
Lack of affordable housing	2	14.29%
Insufficient recreational opportunities	0	0%
Environmental degradation	0	0%
Strained infrastructure (water, sewer)	0	0%
Increased crime	2	14.29%
School overcrowding/quality of education	3	21.43%
Other	0	0%
Totals	14	100%



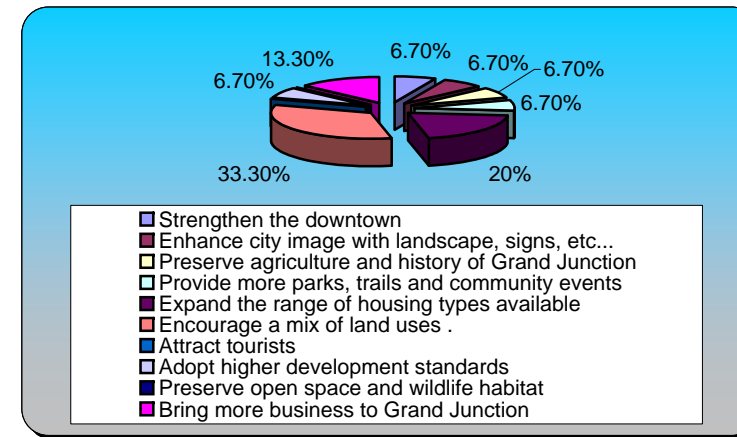
16.) What do you see as the HIGHEST PRIORITY for Grand Junction over the next ten years? (asked twice)

	Responses	
Strengthen the downtown	4	26.67%
Enhance city image with landscape, signs, etc...	0	0%
Preserve agriculture and history of Grand Junction	0	0%
Provide more parks, trails and community events	1	6.67%
Expand the range of housing types available	2	13.33%
Encourage greater mix of land uses	3	20%
Attract tourists	0	0%
Adopt higher development standards	0	0%
Preserve open space and wildlife habitat	2	13.33%
Bring more business to Grand Junction	3	20%
Totals	15	100%



17.) What do you see as the SECOND HIGHEST PRIORITY for Grand Junction over the next ten years?

	Responses	
Strengthen the downtown	1	6.67%
Enhance city image with landscape, signs, etc...	1	6.67%
Preserve agriculture and history of Grand Junction	1	6.67%
Provide more parks, trails and community events	1	6.67%
Expand the range of housing types available	3	20%
Encourage a mix of land uses .	5	33.33%
Attract tourists	0	0%
Adopt higher development standards	1	6.67%
Preserve open space and wildlife habitat	0	0%
Bring more business to Grand Junction	2	13.33%
Totals	15	100%



18.) Regarding Planning and decision-making (e.g. approving developments), which of the following BEST represents your feelings:

	Responses	
The City should have a plan and stick to it	0	0%
The City should have a plan, depart only for benefit	8	50%
The City should have a plan, but use generally	8	50%
A plan is not all that important, you can't plan	0	0%
Totals	16	100%

